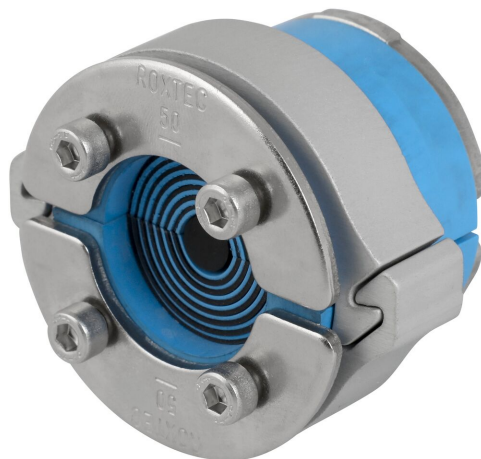




# Roxtec C RS SLO-tætning

Rund tætning til plads- og vægtoptimering.

Roxtec C RS SLO er en let, men meget stærk tætningsløsning til enkelt kabel- og rørgennemføringer i skabe, kabinetter og elektrisk udstyr. Løsningen beskytter mod vandindtrængning, brand og vibrationer og er ideel til anvendelse i transportsektoren som f.eks. rullende materiel. Løsningen består af en Roxtec C RS-tætning og en Roxtec C SLO-sleeve. Den fås i fire forskellige størrelser til kabler og rør med Ø4-54 mm.



- Letvægt
- Pladsbesparende
- Kan bruges til preterminerede kabler
- Kan åbnes

## Produktegenskaber



Brandklassificeret



IP/UL NEMA

## Byggekonstruktion



EI-skabe og kabinetter

## Normeringer og certifikater

### Brand

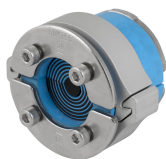
- E/EI-klassificering i henhold til EN 45545 E30

### Tæthed

- IP 66

## Data om tætningskomponenter

### Tætningskomponenter



C RS SLO tætning

For merne information, besøg venligst [roxtec.com](https://www.roxtec.com).



## Foreslåede tætningskit

mm/kg



C RS SLO 43 ALU



C RS SLO 50 ALU



C RS SLO 68 ALU



C RS SLO 75 ALU

Title	Konfiguration	Åbningsmål Ø	Vægt	Art.-nr.
C RS SLO 43 ALU	1x (4.0-23.0)	44 - 46	0.25	234690
C RS SLO 50 ALU	1x (8.0-30.0)	51 - 53	0.29	234691
C RS SLO 68 ALU	1x (26.0-48.0)	69 - 71	0.43	234692
C RS SLO 75 ALU	1x (24.0-54.0)	76 - 78	0.5	234694

The product information provided by Roxtec does not release the purchaser of the Roxtec system, or part thereof, from the obligation to independently determine the suitability of the products for the intended process, installation and/or use.

Roxtec gives no guarantee for the Roxtec system or any part thereof and assumes no liability for any loss or damage whatsoever, whether direct, indirect, consequential, loss of profit or otherwise, occurred or caused by the Roxtec systems or installations containing components not manufactured by an authorized manufacturer and/or occurred or caused by the use of the Roxtec system in a manner or for an application other than for which the Roxtec system was designed or intended.

Roxtec expressly excludes any implied warranties of merchantability and fitness for a particular purpose and all other express or implied representations and warranties provided by statute or common law. User determines suitability of the Roxtec system for intended use and assumes all risk and liability in connection therewith. In no event shall Roxtec be liable for indirect, consequential, punitive, special, exemplary or incidental damages or losses.

The Roxtec products are offered and sold in accordance with the conditions of the Roxtec General Terms of Sales. The latest version of the Roxtec General Terms of Sales can be downloaded from <https://www.roxtec.com/en/about-us/about-roxtec/general-terms-of-sales/>

We reserve the right to make changes to the product and technical information without further notice. Any errors in print or entry are no claims for indemnity. The content of this publication is the property of Roxtec International AB and is protected by copyright.

This document was generated on: 2024-09-27